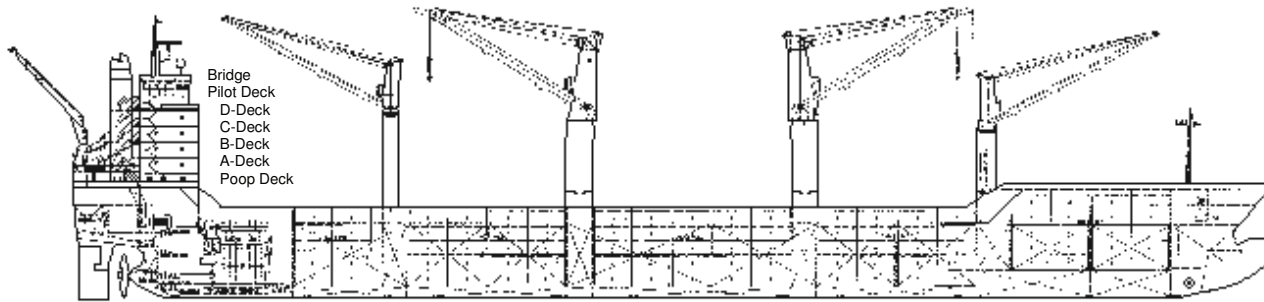


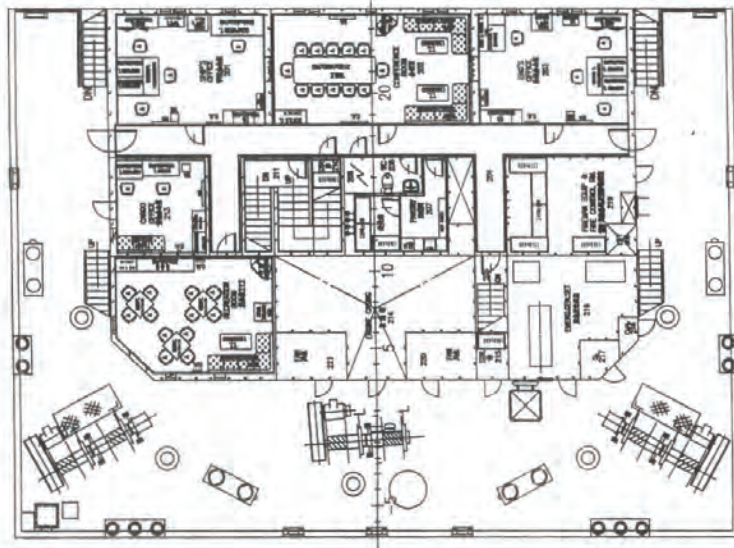
# RICKMERS-LINE PEARL STRING SERVICE



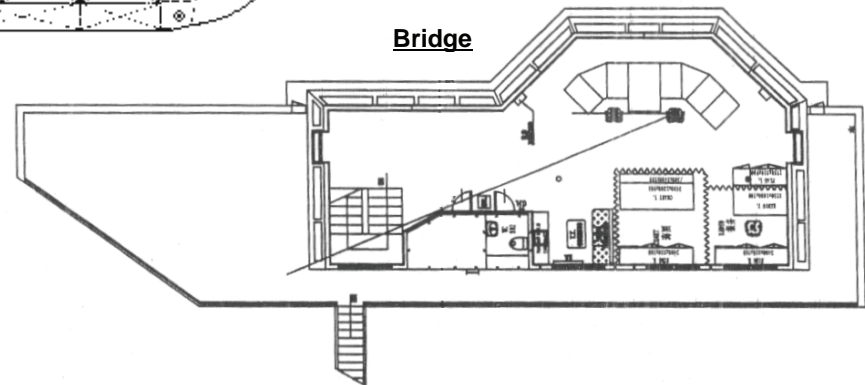
## Multi Purpose Cargo Vessels (MPCs) Mehrzweck-Schiffe

### Decks and Passenger Cabins Decks und Passagierskabinen

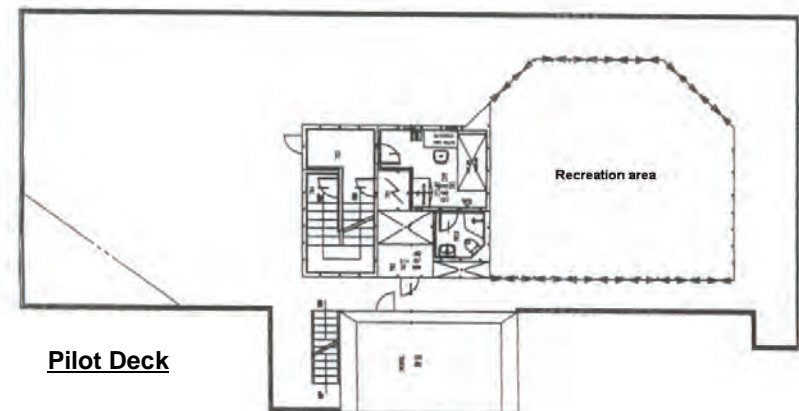
**Poop Deck**



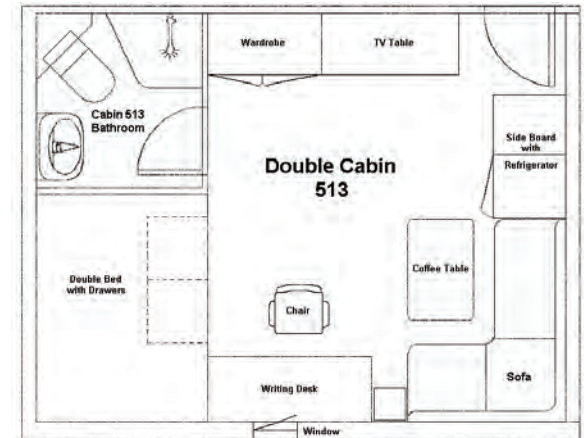
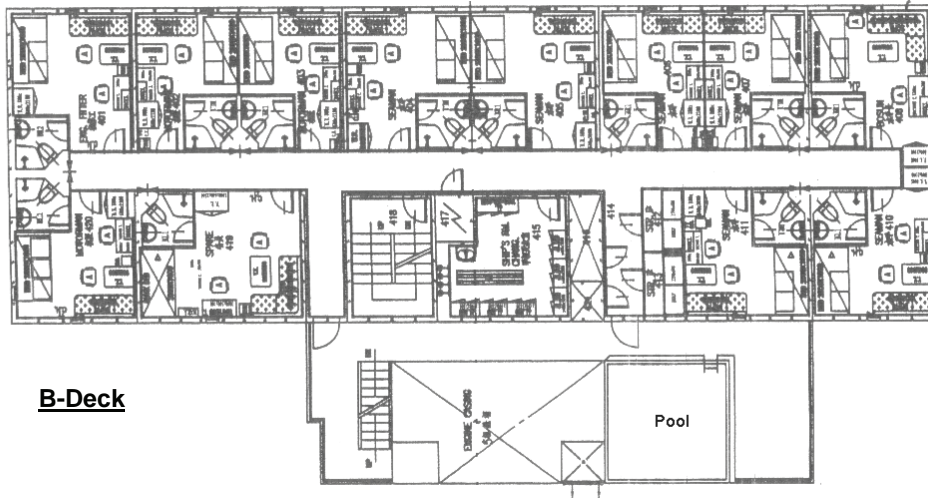
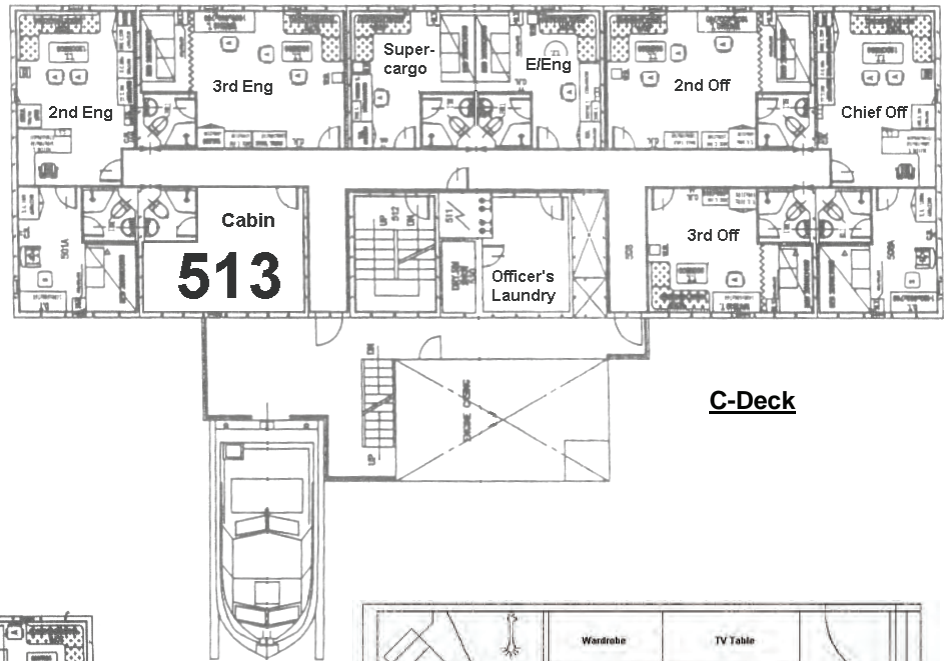
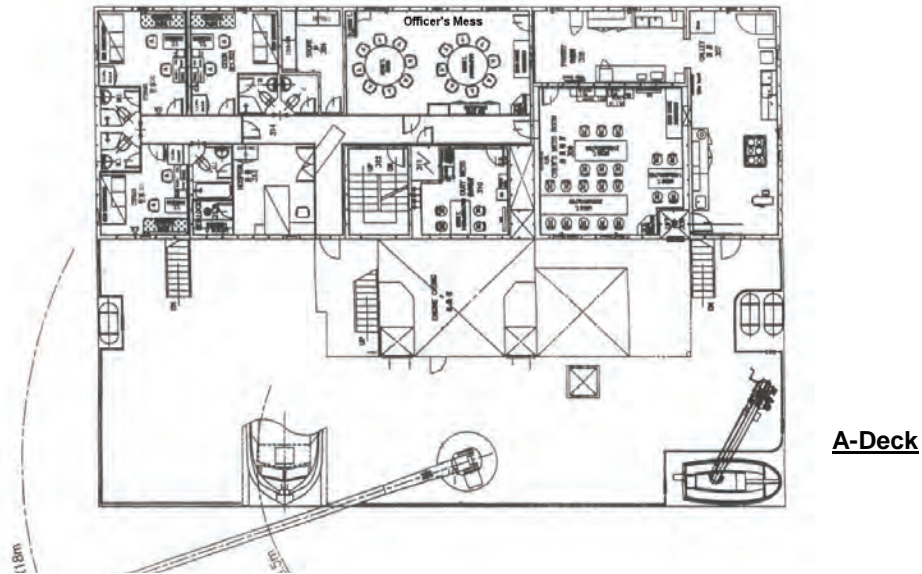
**Bridge**



**Pilot Deck**

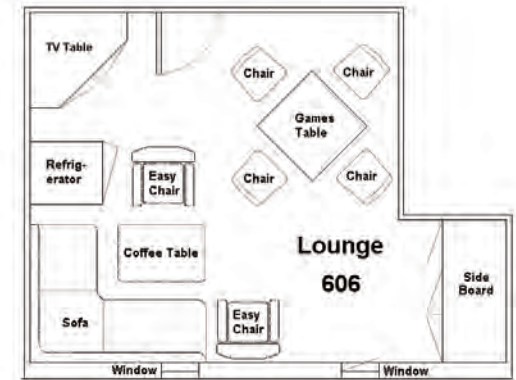
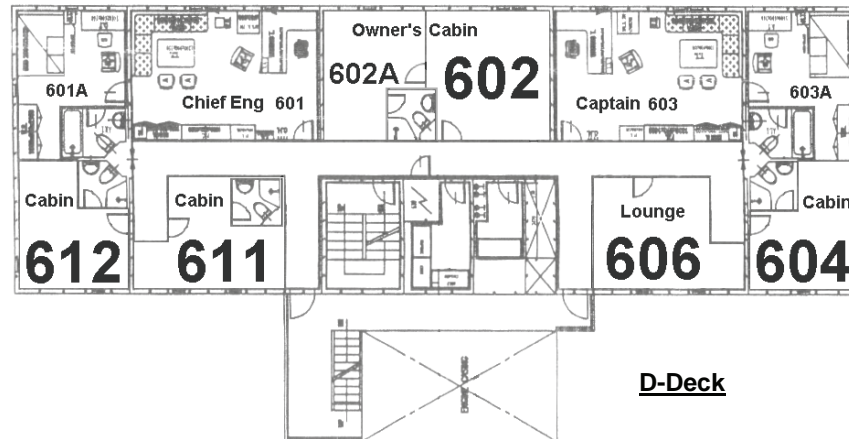
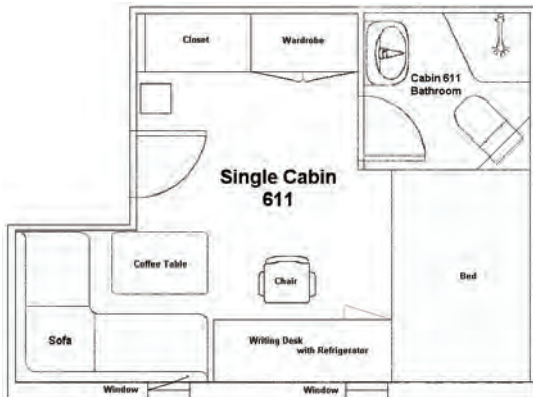
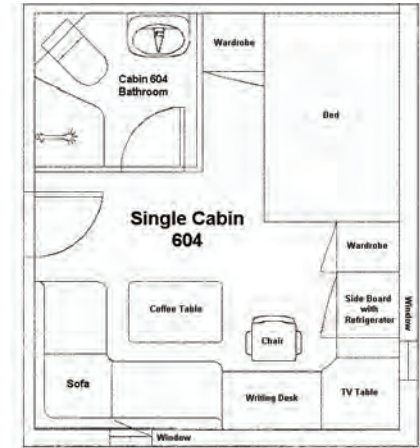
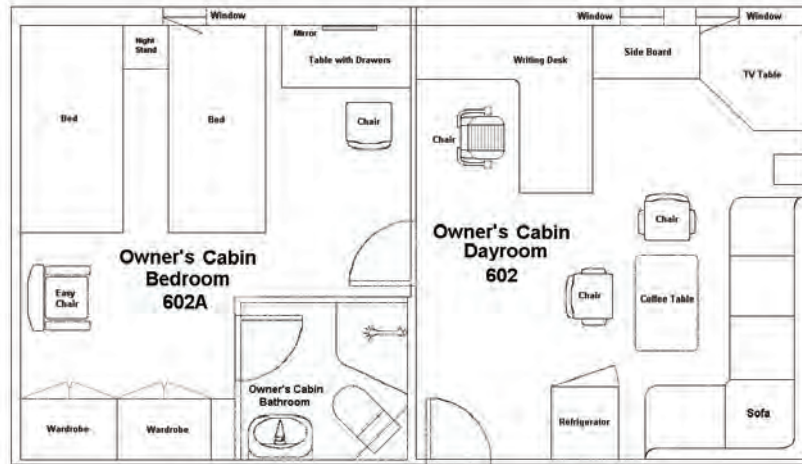


# RICKMERS-LINE PEARL STRING SERVICE





# RICKMERS-LINE PEARL STRING SERVICE





## RICKMERS-LINE PEARL STRING SERVICE PRICE LIST & COMMENTS

(valid as of September 2016)

EUROPE ← USA ↘   ↙ A S I A	P O R T S		Approx. voyage duration days	CABINS AND FIXED PASSAGE FARES per person					special remarks
	of Departure	of Destination		S I N G L E	D O U B L E				
				604, 611, 612 EURO	513 double EURO	513 sole use EURO	602 double EURO	602 sole use EURO	
Segments ex Europe	Antwerp	Genoa	12	960	840	1020	960	1160	
	Hamburg		9	720	630	770	720	860	
Segment ex USA	Philadelphia	Antwerp	15	1200	1050	1280	1200	1440	US Visa for non-US citizens required!
Segments ex Asia	Shanghai (1st call)	Houston	42	3360	2940	3570	3360	4030	China Visa required!
		Antwerp	76	6080	5320	6460	6080	7300	US Visa for non-US citizens required!
		Hamburg	81	6480	5670	6890	6480	7780	

**REMARKS:**

Please note that the actual voyage duration may strongly vary due to special cargo requirements. There will be no additional charge if the actual voyage happens to be longer and no refund if the actual voyage happens to be shorter than the approximate figures above, which are based on averaged values.

**ALL OTHER SECTIONS ON REQUEST ON SHORT NOTICE !**

Additional costs (flat fees per person):		EURO
Port fees:	for section bookings involving Asian ports:	200,00
	for section bookings within Europe only:	50,00
	for section bookings from the USA:	100,00
Vessel fees:	for voyage duration up to 14 days:	95,00
	for voyage duration up to 99 days:	145,00
	for voyage duration more than 99 days:	175,00